



**good for the people who live, work and visit the District  
and good for the natural environment**

## **Addendum: Sandyford Civic Park Design Consultation Report**

### **A. Context**

This report is an addendum to the Sandyford Civic Park Design Consultation Report published in September 2025. The purpose of the report is to gain further insight regarding the views of two target groups, namely teenage girls and parents of young children.

The consultations were done in November and early December 2025. At the time the design consultant, Urban Agency, had a set of draft drawings ready to be used in the consultations. See Appendix for drawings showed to participants in these consultations.

This report summarises the comments of participants to the drawings and how they envisage the park.

### **B. Focus Group Discussion with Teenage Girls**

Teenage girls were invited by the Naomh Olaf GAA Club to meet at the club and discuss the proposed Sandyford Civic Park in the afternoon of 2<sup>nd</sup> November 2025. Only two teenage girls attended, however their insights were very useful. Rory McGuire from Urban Agency also attended.



Learn More Here



## MAKE SPACE FOR GIRLS

Our vision is to create a park and public space that make teenage girls feel valued and included, while ensuring everyone feels welcome!

We want to hear your ideas for Sandyford new civic park!

Sunday 02 November -03:00 PM  
Naomh Olaf GAA

## A NEW PARK FOR SANDYFORD BUSINESS DISTRICT

Help us make a park for everyone!

Aged 14-17?

# We need you!

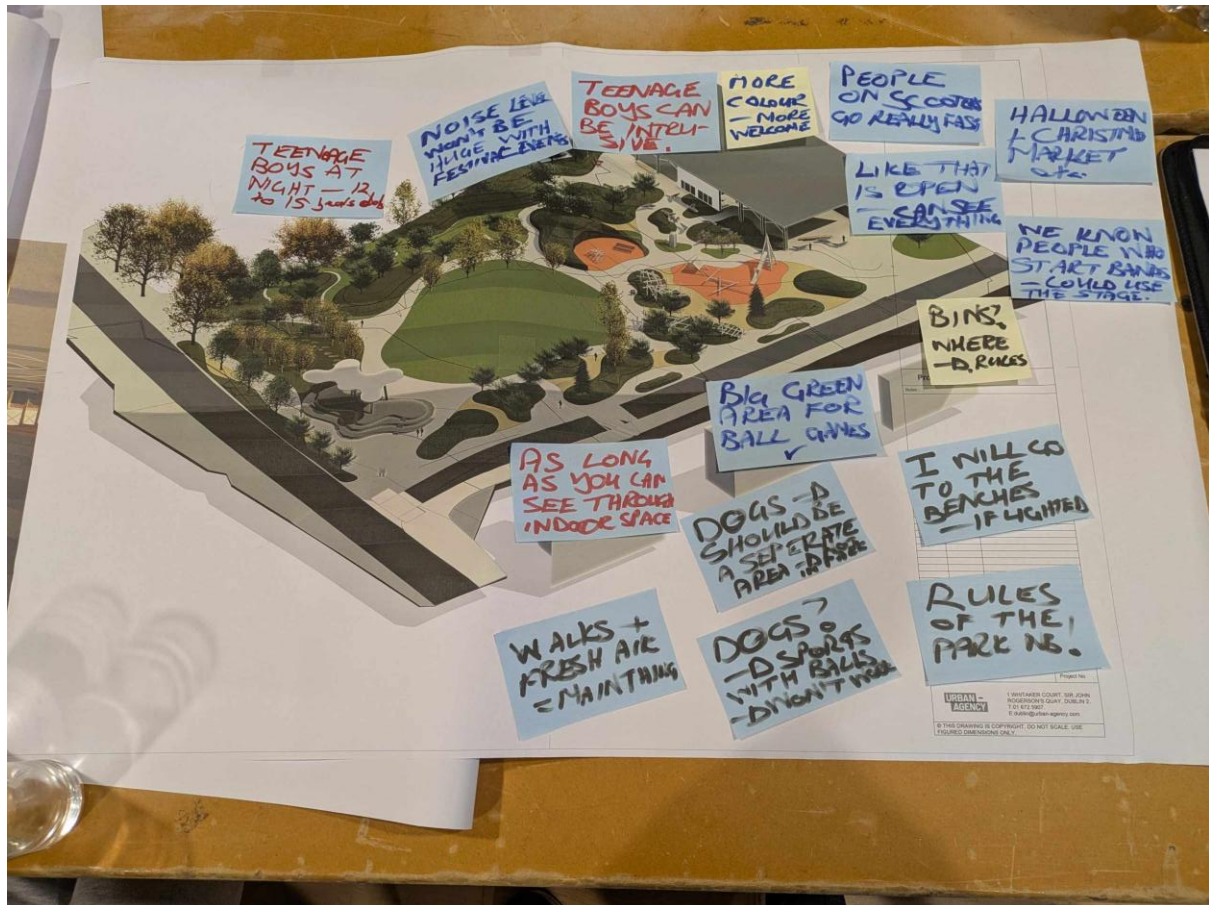


- ① Sports Area
- ② Playground
- ③ Lawn/Games Area
- ④ Canopy
- ⑤ Natural Landscape
- ⑥ Amphitheatre
- ⑦ SUDS Retention
- ⑧ Corrig Road
- ⑨ Carranahall Road



The picture below shows how the comments of the participants were captured.





The following comments are insightful:

- In general both participants were excited about the design of the proposed park and the new facilities that will be available.
- For them the 'main thing' was a space where they can walk and get fresh air.
- A positive safety element of the design for them was that 'the spaces were open so you can see everything'.
- They also were interested in where the benches will be located and if there will be lighting for winter times and during evenings.
- They see the central green in the park as a place where people can play ball games.
- They were excited about the open amphitheatre (band stand) which they envisaged as a venue for local events and concerts. According to them there are people they knew in their age cohort who have started bands and will be interested to perform in this space. When prompted about noise, they thought it ill not be a major disturbance if the music events are local community concerts and not large commercial events.
- They also saw the park as a great venue for Christmas markets and Halloween events which could be great community attractions.
- Their main concern was the boisterous behaviour of teenage boys (aged 12 to 15 years old) especially at night in the park. This includes going really fast on e-scooters through the park which is threatening to other users of the park.
- They also thought that there should be a separate area for dogs in the park and that if there are ball games on the green that it won't work with dogs off their leashes.

- With regard to the covered play space, their main comment is that it should be a ‘see-through’ indoor space.
- They also think that the more colours used, i.e. painted objects, the more welcoming people will feel.
- They asked if there will be bins in the park.

In conclusion, it is clear that in addition to the great design elements, there also will have to be clear rules for the use of the park.

### C. Focus Group Discussion with parents of small children (aged 5 to 7 years)

The focus group discussion with parents of small children who live in the Sandyford Business District was made possible with the help of the Queen of Angels National School.

Initially a discussion was planned for 8.00 am in the school hall on 4<sup>th</sup> November 2025. This was not successful, so with the advice of local teachers, the session was rescheduled to an afternoon time slot in the parents room on 2<sup>nd</sup> December 2025 – i.e. at the time when parents will collect their children. This was much more successful, and a discussion was held with 11 parents who came into the room and gave their comments as captured below.

Note that all the parents were of Asian backgrounds and living in Sandyford Business District.



The following comments are insightful:

- In general, there was huge enthusiasm for the designs of the proposed new park with comments like 'It's cool!' and 'It looks perfect!' and 'We are waiting for this park!'.
- When prompted about how they see the park as a place for their kids to go to, they pointed out that there are very limited spaces in the District which can cater for activities with their kids, and saw this as a key space for this purpose. One can assume this covers activities ranging from children's birthday parties, to playing games to just being in the outdoors.
- An interesting point raised by a number of parents was that they want the park to be a safe place for their kids to cycle and scoot, and in particular, a place where they can teach their kids to cycle and scoot.
- For themselves, parents want a place for walking and possibly a place where they can have a coffee or tea.
- There were a few concerns raised such as how the space will be designed to prevent kids from running into the streets, and, making sure that the surfaces weren't slippery especially with the many rainy days experienced in the District.
- There were also questions about facilities where kids could jump and slide and also if a swimming pool was being considered.

In conclusion, there is a resounding positive response from these focus group discussions to the draft drawings and it appears that now the expectations have been raised and the main question is how soon the park will be completed!



## Appendix



### 1. Communal Table



## 2. SUDS Retention Area



### 3. Informal Seating Areas



#### 4. Boulders/Gabion Walls



### 5. Reclaimed Paving



## 6. Covered Amphitheatre



## 7. Formal Playground



## 8. Children Risk Play



## 9. SUDS Routes



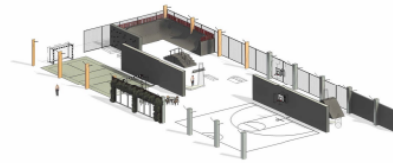
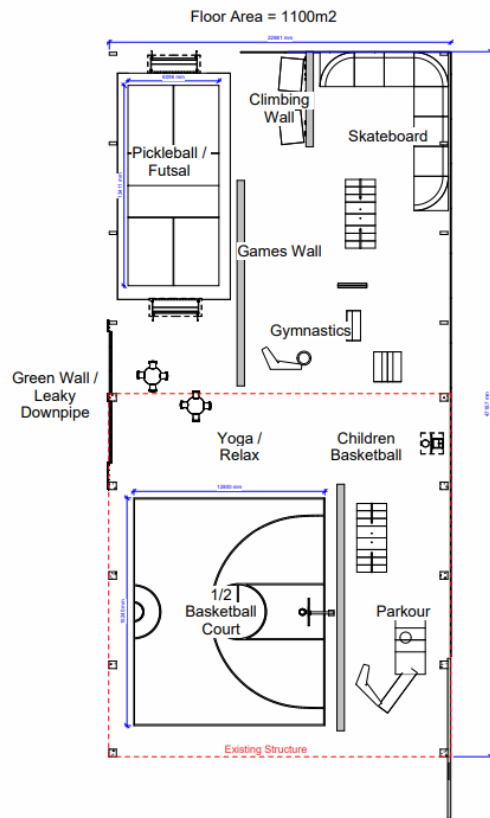
### 10. Play Along The Way



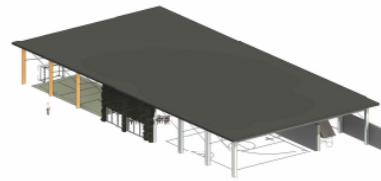
### 11. Play Tower



## 12. Central Lawn Area



① 3D Internal



③ 3D External

DRAFT

**URBAN -  
AGENCY**  
Sandyford Civic Park





